

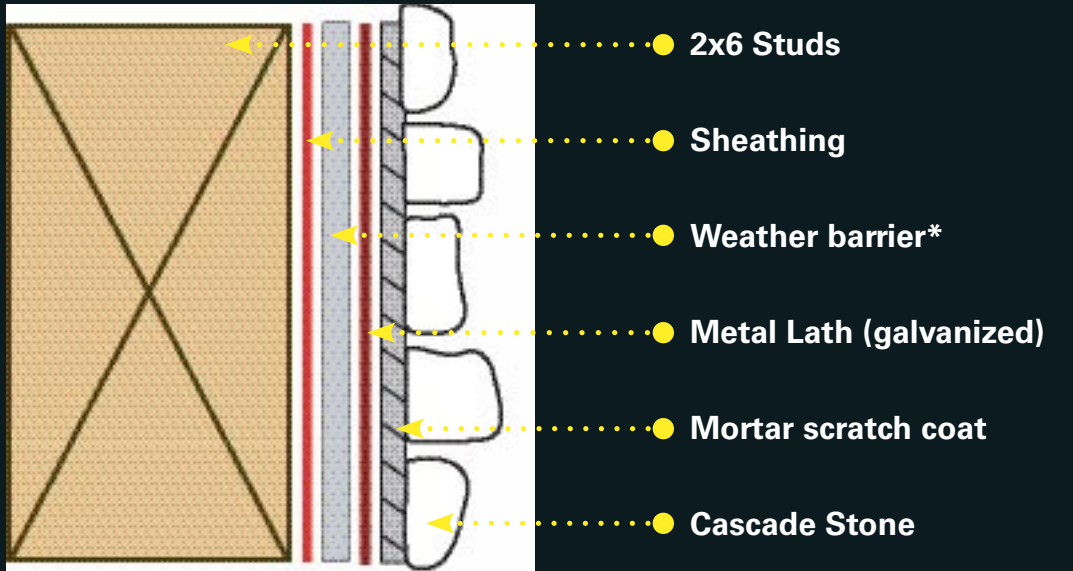
Cover stone: Minnesota Blend Fieldstone

Mall of America (St. Croix Trap Rock)



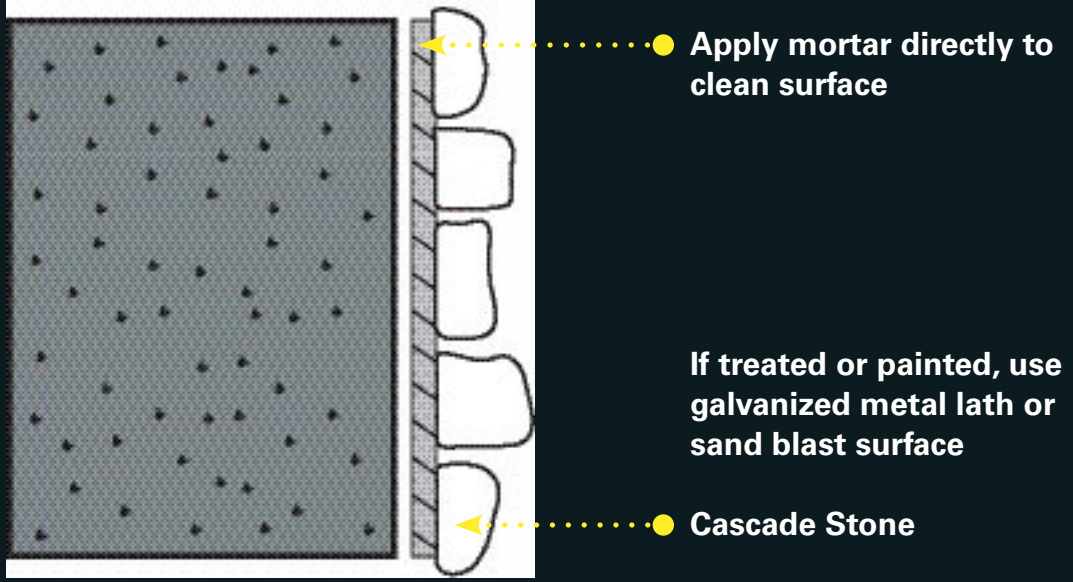
# Installation Cross Section

## Wood Frame:



- 2x6 Studs
- Sheathing
- Weather barrier\*
- Metal Lath (galvanized)
- Mortar scratch coat
- Cascade Stone

## Block or masonry:



- Apply mortar directly to clean surface
- Cascade Stone

If treated or painted, use galvanized metal lath or sand blast surface

## Cascade Stone installation:

Apply approximately 1/2 inch of mortar on back of stone and set stone on wall with back and forth movement.  
 Cascade Stone manufactures stones that can be installed one of three ways; grouted, dry stacked or both.  
 Check with Cascade Stone at the time of purchase for installation instructions that correspond with the type of stone you have selected.

Cascade Stone, Inc.  
 15 Old Hwy. 8  
 New Brighton, MN 55112  
 ph: 651.774.9657  
 fax: 651.774.1602  
 email: info@cascadestone.com  
 www.cascadestone.com

### Hearth Stones



### Sill Stones



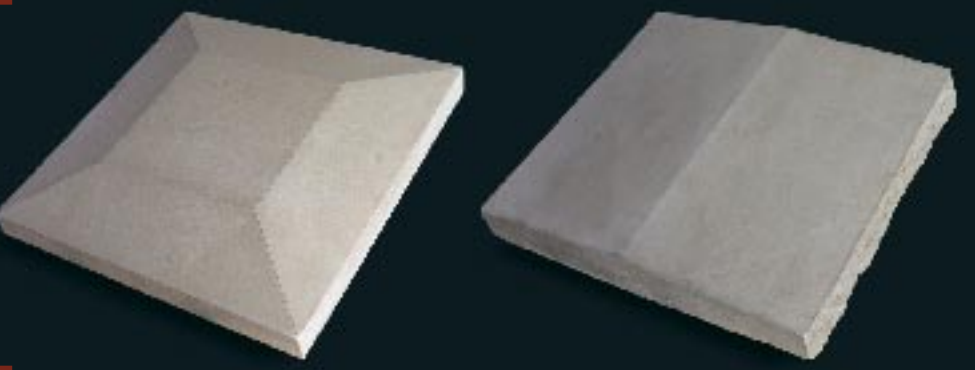
### Key Stones



### Corner Stones



### Cap Stones



Our accessories can be built to go with any one of our stone styles. The smooth and fine textured finish accent any fireplace, wall or gate.  
 Color and thickness provide natural depth and detail that will compliment any project.